

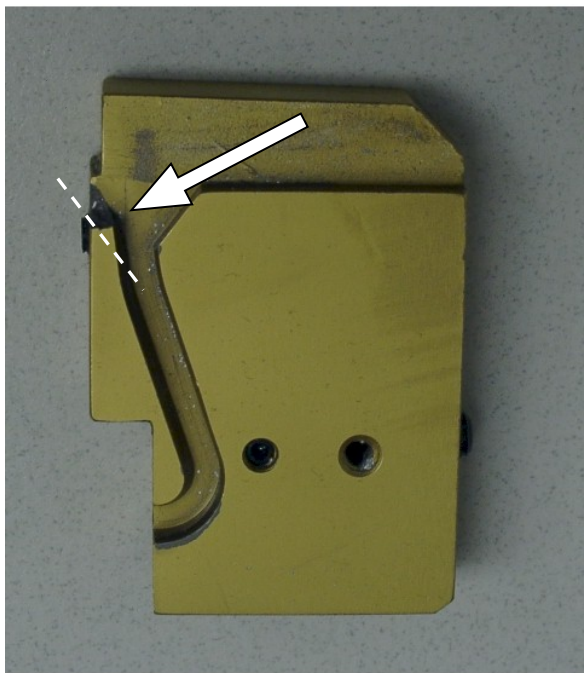
Bulletin No	10	2004-01	Issued: 04/30/04	Revised:	Page 1 of 1
Equipment	1 Gallon Bail-O-Matic				
Topic	Curling Die Repair				

## **Issue**

The Bail-O-Matic is a wire forming machine with settings and wear parts that must be periodically checked. The performance and reliability of the Bail-O-Matic machine are directly affected by the accuracy of the settings and the condition of these parts. If not maintained properly, jamming of wire may occur. If the wire jams against the top of the wire entrance on the curling die, it is possible that this material can break off leaving a sharp edge.

## **Recommendation**

In many cases the Curling die is still usable by simply stoning or grinding the sharp ragged edge caused by the breakage so the wire does not catch. Bevel and radius the remaining material as indicated by the arrow to provide a smooth path for the wire to enter into the grooved portion of the Curling Die. This will not affect the performance of the die. Below shows before and after pictures.



Curling Die before Repair



Curling Die after Repair