

HEISLER

Industries, Inc

224 Passaic Ave
Fairfield, NJ
07004-3581

TEL: 973-227-6300
FAX: 973-227-7627

Heislerind.com

Technical Bulletin

Bulletin No	70	2020-01	Issued: 050520	Revised:	Page 1 of 4
Equipment	HL-70 Wet Glue Pail Labeler				
Topic	Improved Exchange Bearing Pipe Assembly for LH & RH Glue Roller				

Topics:

- Significant improvements have been made to the Bearing Pipe. These improvements include; robust taper bearings, access for a bearing race puller, seal retaining screws, and a vent.
- An “EXCHANGE BEARING PIPE for LH GLUE ROLLER” assembly, and an “EXCHANGE BEARING PIPE for RH GLUE ROLLER” assembly, are now available for ease of changeout, & reduced downtime when repairing or rebuilding the assembly.
- An explanation of the grease type, the period between grease application, and the method of greasing is included below on Page 4.

Recommendations:

When replacing the glue roller shaft bearings, update to the new BEARING PIPE. The new pipe is vented, has seal retaining screws, and has been modified to accommodate a bearing race puller for ease of bearing removal.

You can order any of the parts individually as listed in the below drawings, or order the complete exchange assembly by contacting our Parts Department.

NOTE: Please always refer to your machine's Serial Number.

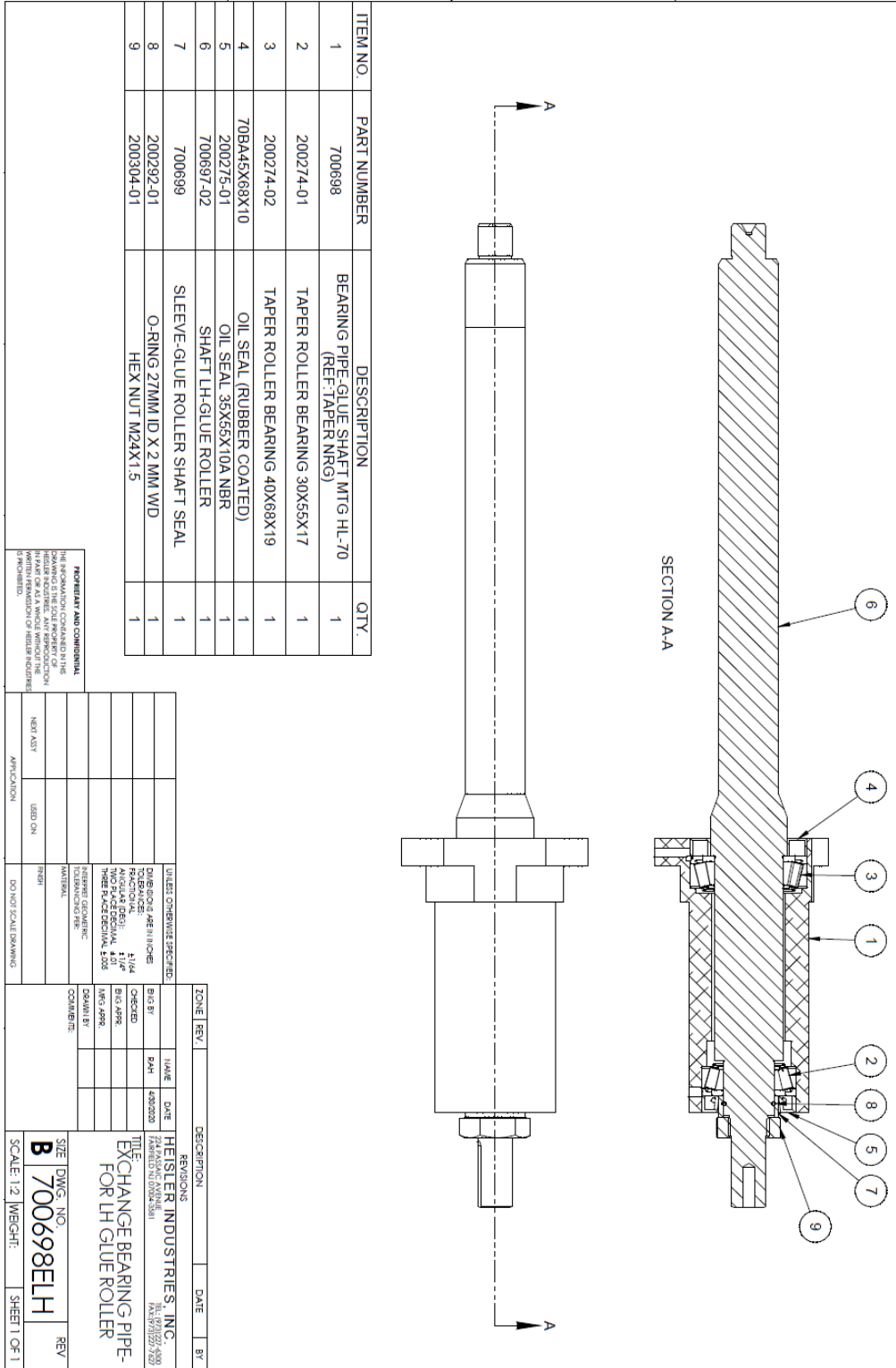
Rich Heerema
Parts Department
P (973) 227-6300 ext. 239
F (973) 227-7294
rheerema@heislerind.com

HEISLER INDUSTRIES, INC.
224 PASSAIC AVE
FAIRFIELD, NJ 07004

EXCHANGE BEARING PIPE ASSEMBLY for LH GLUE ROLLER Part #: 700698ELH

EXCHANGE BEARING PIPE ASSEMBLY for RH GLUE ROLLER Part #: 700698ERH

Bulletin No	70	2020-01	Issued: 050520	Revised:	Page 2 of 4
Equipment	HL-70 Wet Glue Pail Labeler				
Topic	Improved Exchange Bearing Pipe Assembly for LH & RH Glue Roller				



ITEM NO.	PART NUMBER	DESCRIPTION	QTY.
1	700698	BEARING PIPE-GLUE SHAFT MTG-HL-70 (REF:TAPER NRG)	1
2	200274-01	TAPER ROLLER BEARING 30X55X17	1
3	200274-02	TAPER ROLLER BEARING 40X68X19	1
4	70BA45X68X10	OIL SEAL (RUBBER COATED)	1
5	200275-01	OIL SEAL 35X55X10A NBR	1
6	700697-02	SHAFT LH-GLUE ROLLER	1
7	700699	SLEEVE-GLUE ROLLER SHAFT SEAL	1
8	200292-01	O-RING 27MM ID X 2 MM WD	1
9	200304-01	HEX NUT M24X1.5	1

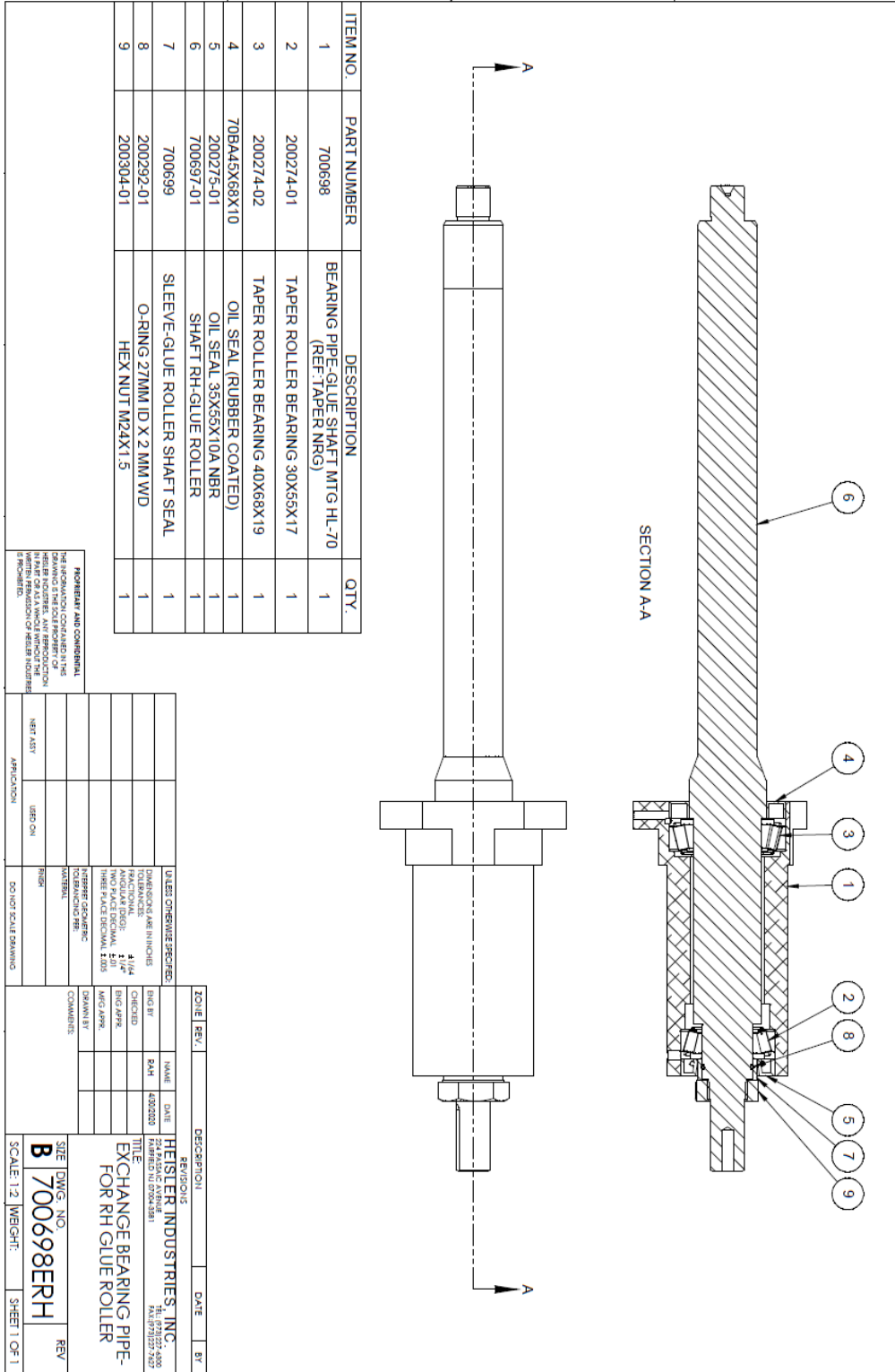
PROPRIETARY AND CONFIDENTIAL
 THE INFORMATION CONTAINED IN THIS DRAWING IS THE SOLE PROPERTY OF HEISLER INDUSTRIES, INC. IT IS TO BE USED FOR THE SPECIFIC APPLICATION AND IN WHOLE WITHOUT THE WRITTEN PERMISSION OF HEISLER INDUSTRIES, INC.

APPLICATION	USED ON	FINISH	DO NOT SCALE DRAWING
HEAVY ASST			

ZONE	REV	DATE	BY

REVISIONS
 HEISLER INDUSTRIES, INC.
 17000 W. 10TH AVE.
 HEISLER, MO 64720-3229
 PHONE: 417-255-4200
 FAX: 417-255-4202
 TITLE: EXCHANGE BEARING PIPE- FOR LH GLUE ROLLER
 SIZE: DWG. NO. B 700698ELH
 SCALE: 1:2 WEIGHT: SHEET 1 OF 1

Bulletin No	70	2020-01	Issued: 050520	Revised:	Page 3 of 4
Equipment	HL-70 Wet Glue Pail Labeler				
Topic	Improved Exchange Bearing Pipe Assembly for LH & RH Glue Roller				



ITEM NO.	PART NUMBER	DESCRIPTION	QTY.
1	700698	BEARING PIPE GLUE SHAFT MTG HL-70 (REF: TAPER NRG)	1
2	200274-01	TAPER ROLLER BEARING 30X56X17	1
3	200274-02	TAPER ROLLER BEARING 40X68X19	1
4	70BA45X68X10	OIL SEAL (RUBBER COATED)	1
5	200275-01	OIL SEAL 35X56X10A NBR	1
6	700697-01	SHAFT RH-GLUE ROLLER	1
7	700699	SLEEVE-GLUE ROLLER SHAFT SEAL	1
8	200292-01	O-RING 27MM ID X 2 MM WD	1
9	200304-01	HEX NUT M24X1.5	1

PROPRIETARY AND CONFIDENTIAL
 THE INFORMATION CONTAINED IN THIS DRAWING IS THE SOLE PROPERTY OF HEISLER INDUSTRIES, INC. IT IS TO BE USED FOR THE MANUFACTURE OF THE EQUIPMENT SPECIFICALLY IDENTIFIED HEREIN. REPRODUCTION OF THIS DRAWING WITHOUT THE WRITTEN PERMISSION OF HEISLER INDUSTRIES, INC. IS PROHIBITED.

UNLESS OTHERWISE SPECIFIED:	UNITS: DIMENSIONS ARE IN INCHES
TOLERANCES:	FRACTIONS: ±.0005
DECIMALS: ±.0005	ANGLES: ±.01°
HOLES: ±.0015	THREADS: PER ANSI B1.13-2
KEYS: ±.0005	KEYS: PER ANSI B1.13-2
WELDS: PER AWS A5.1	WELDS: PER AWS A5.1
FINISH: PER ASME Y14.5	FINISH: PER ASME Y14.5
DO NOT SCALE DRAWING	DO NOT SCALE DRAWING

ZONE	REV.	DESCRIPTION	DATE	BY

DESIGNED BY:	NAME:	DATE:	HEISLER INDUSTRIES, INC.
CHECKED BY:	NAME:	DATE:	700698ERH
DRAWN BY:	NAME:	DATE:	700698ERH
SCALE:	1:2	WEIGHT:	SHEET 1 OF 1

Technical Bulletin

Bulletin No	70	2020-01	Issued: 050520	Revised:	Page 4 of 4
Equipment	HL-70 Wet Glue Pail Labeler				
Topic	Improved Exchange Bearing Pipe Assembly for LH & RH Glue Roller				

Recommended grease:

Mobilgrease®XHP222 2 NLGI GRADE

Blue, Lithium Complex, Multi-Purpose Grease



Greasing Period:

We recommend greasing the glue roller shaft bearings daily, to ensure that both bearings stay immersed in grease, and to prevent any glue pushing through the upper seal.

Greasing Method:

Grease the bearing pipe from the bottom grease fitting, until grease escapes from the vent located next to the top grease fitting.

Then grease the top grease fitting, until you feel resistance.

NOTE:

If you have an older un-vented pipe using taper bearings, remove the spring and ball from the top grease fitting, to make it a vent. *(It will still work as a grease fitting.)*

The grease fitting un-screws into two separate pieces.

This will give you access to remove the spring and ball.

Then re-assemble and re-install the fitting.

Always make sure that the top and bottom grease seals are not pushed out past the end of the bearing pipe.

The top grease seal must be flush with the top of the pipe, so that it does not lift up the glue drain pan.

(The newer housing comes with both upper and lower seal retaining screws.)